

*Small and accurate, these low-cost remote temperature sensors are great for monitoring hot spots in your server or equipment room.*

- Factory calibrated
- +/- 0.5 °C accuracy
- Small and lightweight
- Compatible devices support up to 16 sensors

Use these accurate digital sensors to measure temperatures of critical locations in a server room. The small size and weight makes them easy to install where you need them. Goose climate monitors (except MicroGoose) support up to 16 digital sensors with a maximum combined cable length of 600'.

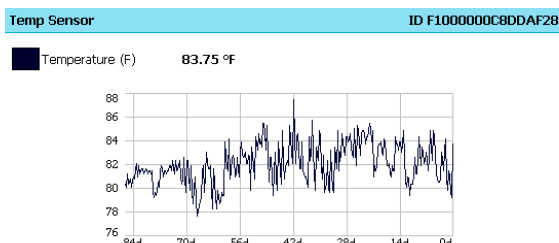
## COMMON SENSOR LOCATIONS

- Air-conditioning inlet (return air)
- Air-conditioning output (vent)
- Ambient room temperature
- Internal cabinet temperature
- Outside (sensor needs to be kept dry)
- Refrigeration units (1 to 3 °C)

## DIGITAL SENSORS

Digital sensors communicate with Goose climate monitors through a serial protocol. When a digital sensor is plugged into a digital-sensor port, the Goose automatically detects and identifies the sensor. Each sensor can be given a "friendly" name, making it easier to identify.

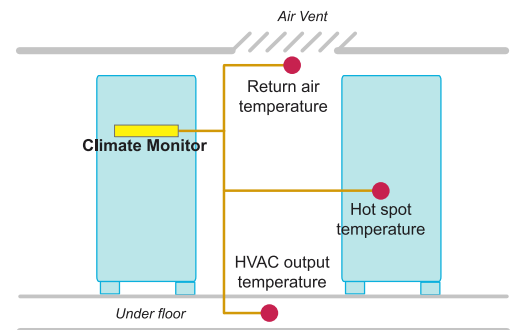
The Goose cycles through the digital sensors to collect and log new readings. Custom alarms are triggered when a sensor value falls above or below a user-defined threshold. Alarm notifications are sent through email or SNMP.



*A temperature graph from the Goose web interface.*



*The small size and weight of the remote temperature sensor makes it easy to install in distant problem areas.*



*Remote temperature sensors attached to this climate monitor provide temperatures values for critical areas.*

### Sensor Details

#### Specifications

Temperature: -40 to 85 °C, +/- 0.5 °C  
Cable type: Cat-3 with RJ-12 connector  
Cable length: 12', 20', 50', 100' or custom  
Warranty: 1 year (extended warranties available)

#### Compatibility

Works with all climate/power monitors with digital ports  
Climate monitors support up to 16 digital sensors  
Max combined cable length of digital sensors is 600'

#### Model Numbers

RT-#, where # = cable length in feet  
Standard versions: RT-12, RT-20, RT-50, RT-100

